



Jubilee Drive, Church Crookham,  
Fleet

01256 8000

  
**MARTIN & CO**

# Jubilee Drive, Church Crookham,

- Freehold
- Council Tax Band E
- EPC B88
- Three/Four Bedrooms
- Annual service charge £279
- Garage
- Two Parking Spaces
- Sought After Crookham Park

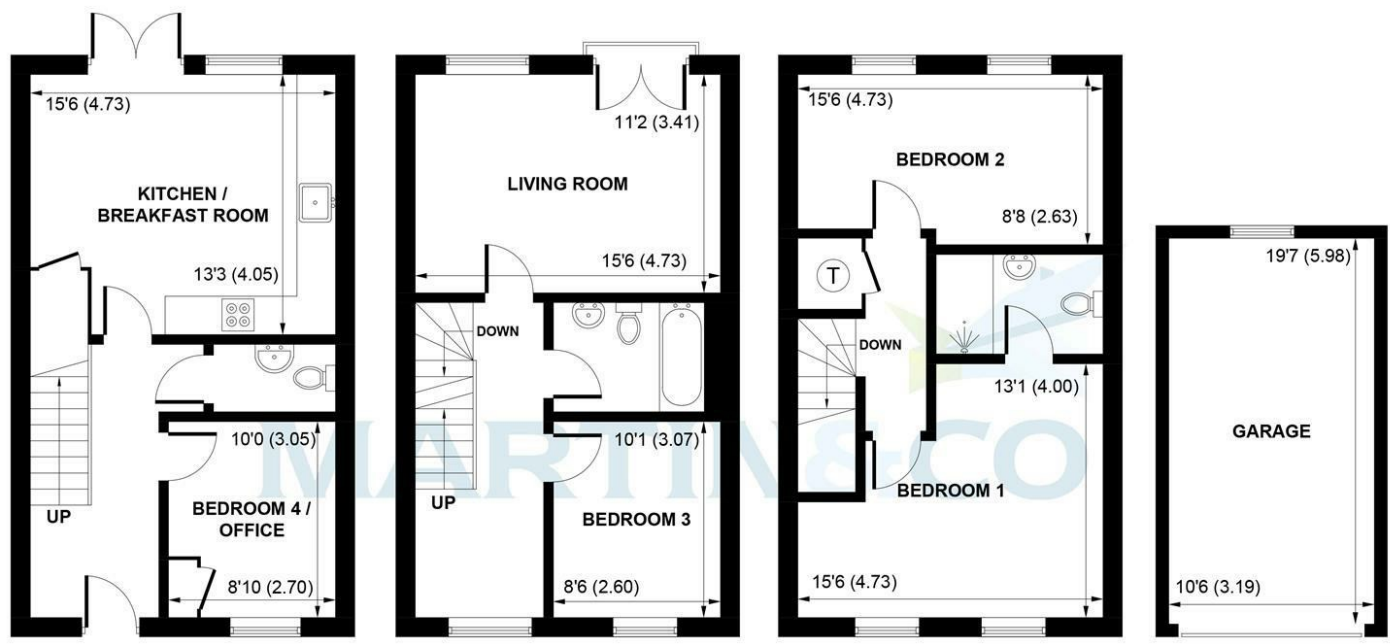
Martin & Co are delighted to offer for sale this superb town house situated in the popular Crookham Park development. Having been meticulously maintained by the current owners since buying it new accommodation comprises of three/four bedrooms, kitchen diner with integrated appliances, downstairs cloakroom, en-suite to master, family bathroom, garden, garage and two parking spaces. Call now to view!

Energy Efficiency Rating	
Current	Potential
88	90

Environmental Impact (CO <sub>2</sub> ) Rating	
Current	Potential
81	92

# Jubilee Drive, Crookham Park

Approximate Gross Internal Area = 121.0 sq m / 1302 sq ft  
 Garage = 19.2 sq m / 207 sq ft  
 Total = 140.2 sq m / 1509 sq ft



GROUND FLOOR

FIRST FLOOR

SECOND FLOOR

(NOT SHOWN IN ACTUAL LOCATION / ORIENTATION)

This plan is for layout guidance only. Not drawn to scale unless stated. Windows and door openings are approximate. Whilst every care is taken in the preparation of this plan, please check all dimensions, shapes and compass bearings before making any decisions reliant upon them. (ID 1045716)  
 Produced by BlueSky Estate Agency Services on behalf of Martin&Co

Martin & Co Aldershot Sales  
 173 Victoria Road, Aldershot, Hampshire, GU11 1JU  
 01252 311974 . aldershot@martinco.com

01252 311974  
<http://www.martinco.com>



**Accuracy:** References to the Tenure of a Property are based on information supplied by the Seller. The Agent has not had sight of the title documents. A Buyer is advised to obtain verification from their Solicitor. Items shown in photographs including but not limited to carpets, fixtures and fittings are not included unless specifically mentioned within the sales particulars. They may however be available by separate negotiation. Buyers must check the availability of any property and make an appointment to view before embarking on any journey to see a property. No person in the employment of the agent has any authority to make any representation about the property, and accordingly any information given is entirely without responsibility on the part of the agents, sellers(s) or lessors(s). Any property particulars are not an offer or contract, nor form part of one. **Sonic / laser Tape:** Measurements taken using a sonic / laser tape measure may be subject to a small margin of error. **All Measurements:** All Measurements are Approximate. **Services Not tested:** The Agent has not tested any apparatus, equipment, Fixtures and Fittings or services and so cannot verify that they are in working order or fit for the purpose. A Buyer is advised to obtain verification from their Solicitor or Surveyor.

